

114

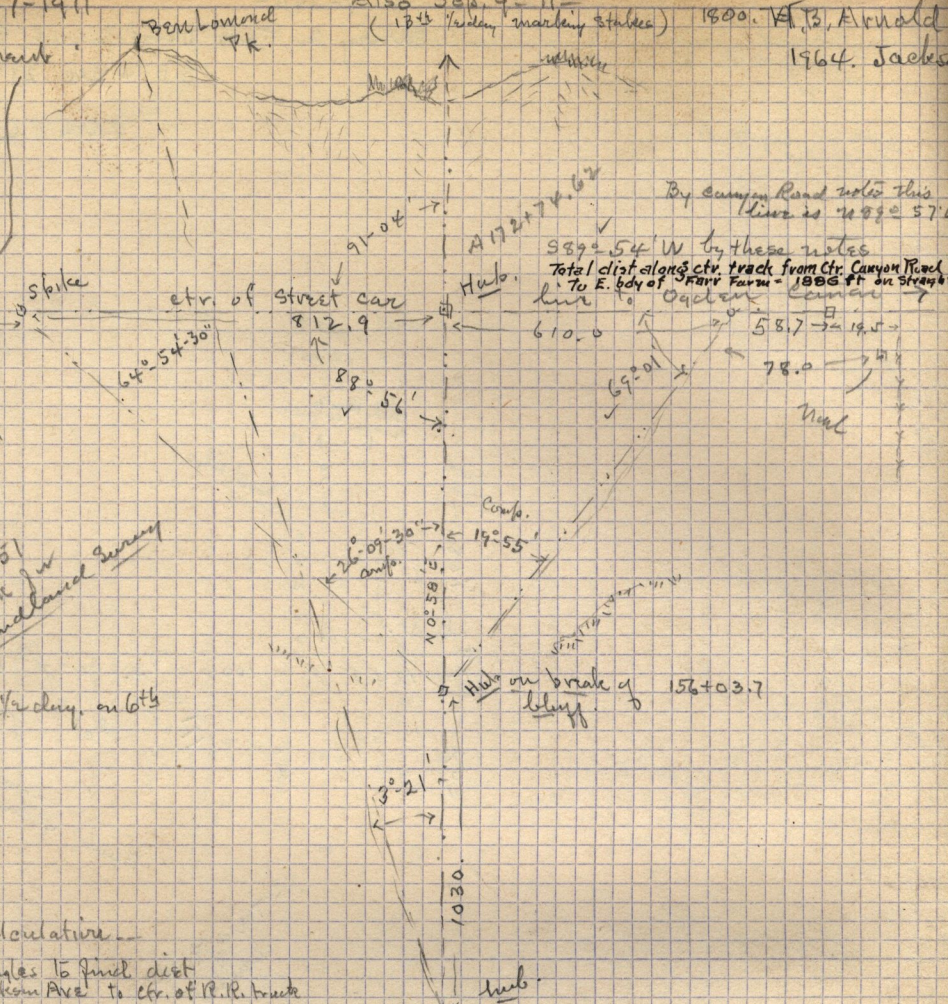
Sept 1-1911

Also see 9th 11th
(13th 14th 15th 16th 17th 18th 19th 20th 21st 22nd 23rd 24th 25th 26th 27th 28th 29th 30th 31st)

1800. A. B. Arnold
1964. Jackson

Farm Development

Co
S.E. 1/4 Sec. 21
Ran Jackson
ave. to intersect
Street Car line
Carl Filigosa asst
4 days - 6th 7th 9-11th



Tracy + P also assisted on 9th + 11th

See Plat Book
p. 89

See also p. 151
this book for
condemned quarry

Alphonso helped survey on 6th

Sept 8-1916 - Calculative

Solution of triangles to find dist
along ctr. of Jackson Ave to ctr. of R.R. track

(1)

sin	26°-09'-00"	=	9.4442940
ac		=	0.3557060 ✓
"	64°-54'-30"	=	9.9569510 ✓
log	812.9	=	2.9100371 ✓
	1669.91	=	3.2226941 ✓
			<u>3.5</u>

(2)

sin	19°-55'	=	9.5323123
ac		=	0.4676877 ✓
"	69°-01'	=	9.9702002 ✓
log	610.0	=	2.7853298 ✓
	1671.93	=	3.2232177 ✓
			<u>10.3</u>
			<u>74</u>

mean of (1) + (2) = 1670.92

145+73.7 → ctr. 20th str.
1030.
Hub
Hub on break of lobby
156+03.7
Cfr. Jackson,